

## LIMITED WARRANTY

All Legend ® Suspensions' parts are guaranteed to the original purchaser to be free of manufacturing defects and workmanship. Parts that fail to conform to these conditions will be repaired or replaced at Legend ® Suspensions' option if the parts are returned to Legend ® Suspensions by the original purchaser. Delivery of the original purchase invoice or receipt along with the part to Legend ® Suspensions is a condition precedent to Warranty coverage. Warranty coverage is a limited two-year period from date of purchase, proof of purchase required.

In the event the original purchaser believes warranty service is required, the original purchaser must call or e-mail Legend ® Suspensions immediately to discuss the concern. Some concerns may be rectified by a telephone call and need no further course of action.

A part that is suspect of being defective must not be replaced by a Dealer or any other person without prior written authorization from Legend ® Suspensions. If it is deemed necessary for Legend ® Suspensions to make an evaluation of the part to determine whether a defect exists, a return authorization number (RA#) must be obtained from Legend ® Suspensions by the original purchaser. Properly obtaining a return authorization number from Legend ® Suspensions is a condition precedent to Warranty coverage.

The part must be packaged properly to not cause further damage and be returned prepaid to Legend ® Suspensions with a copy of the original invoice or receipt of purchase. If after evaluation, Legend ® Suspensions finds the part to be defective, Legend ® Suspensions will repair or replace the part, at the discretion and option of Legend ® Suspensions.

### Exclusions

This warranty is void if:

- (1) the Legend ® Suspensions' part is repaired, modified, or altered, unless such repair, modification, or alternation is expressly authorized by Legend ® Suspensions in writing;
- (2) the Legend ® Suspensions' part becomes defective in whole or in part as a result of improper installation, improper maintenance, improper use, abnormal operation, or any other misuse or mistreatment of the Legend ® Suspensions' part;
- (3) the Legend ® Suspensions' part is installed or used in any Utility Terrain Vehicle (UTV) or other vehicle other than an Unmodified Factory OEM UTV;
- (4) the Legend ® Suspensions' part is installed or used on any UTV or other vehicle being used in any form of competitive riding or racing.
- (5) the Legend ® Suspensions' part is installed or used on any UTV or other vehicle being operated at a speed in excess of the speed allowed by any applicable law, regulation, or ordinance or is operated in any other manner in violation of any applicable law, regulation, or ordinance;
- (6) the serial or parts identification number of the Legend ® Suspensions' part is defaced or missing;
- (7) the Legend ® Suspensions' part is returned with no authorization number issued from Legend ® Suspensions; or
- (8) the original purchase invoice or receipt is not provided to Legend ® Suspensions along with the part.

### Additional Limitations

- (1) Legend ® Suspensions shall have no warranty or liability obligation to cover workshop labor charges incurred to install or remove suspension systems or individual components.
- (2) Electrical components are limited to a two-year manufacturer's warranty from the original invoice date or installation.
- (3) Limited two-year warranty as used within this warranty is further defined as the two-year time frame of the specific product line. Any product line that has been discontinued for which replacement parts are no longer available is not covered by this warranty.
- (4) The customer is liable for shipping charges to and from Legend ® Suspensions for warranty repairs or replacement parts consistent with this warranty.

LEGEND ® SUSPENSIONS (INCLUDING ITS SUBSIDIARIES, AFFILIATES, OFFICERS, DIRECTORS, EMPLOYEES, AGENTS OR SHAREHOLDERS) SHALL NOT, UNDER ANY CIRCUMSTANCES, WHETHER AS A RESULT OF BREACH OF CONTRACT, BREACH OF WARRANTY, TORT, STRICT LIABILITY, THE FAILURE TO DELIVER, DELAY IN DELIVERY IN NON-CONFORMING CONDITION, OR FOR ANY OTHER BREACH OF CONTRACT OR DUTY BETWEEN LEGEND ® SUSPENSIONS AND A CUSTOMER OR OTHERWISE, BE LIABLE FOR CONSEQUENTIAL, INCIDENTAL, SPECIAL OR EXEMPLARY OR PUNITIVE DAMAGES INCLUDING, WITHOUT LIMITATION, LOSS OF PROFITS OR REVENUES, LOSS OF OTHER GOODS OR ASSOCIATED EQUIPMENT OR DAMAGES TO ANY ASSOCIATED EQUIPMENT, COST OF CAPITAL OR LABOR, COST OF REPLACEMENT OR SUBSTITUTE PRODUCTS, OR LOSS OF TIME. IN THE EVENT THAT LEGEND ® SUSPENSIONS SHALL BE UNABLE TO REPAIR OR REPLACE THE PRODUCT AS REQUIRED HEREIN, THE LIABILITY OF LEGEND ® SUSPENSIONS TO YOU OR ANY OTHER PARTY SHALL NOT EXCEED THE PRICE ACTUALLY PAID BY YOU FOR THE PRODUCT, UPON THE PAYMENT OF WHICH, LEGEND ® SUSPENSIONS SHALL BE RELEASED FROM AND DISCHARGED OF ALL FURTHER OBLIGATIONS AND LIABILITY TO YOU.

THIS LIMITED TWO YEAR WARRANTY GIVES YOU SPECIFIC LEGAL RIGHTS, AND YOU MAY ALSO HAVE OTHER RIGHTS THAT VARY FROM STATE TO STATE. SOME STATES DO NOT ALLOW THE EXCLUSION OR LIMITATION OF INCIDENTAL OR CONSEQUENTIAL DAMAGES, SO THE ABOVE LIMITATION OR EXCLUSION MAY NOT APPLY TO YOU.

### WARNING:

Legend Suspensions recommends this system be installed by a professional technician with professional knowledge of disassembly / reassembly procedures and post installation checks. Legend Suspensions are designed to be installed and used on **Unmodified Factory OEM UTVs only**.

Legend Suspensions assumes no responsibility for damage or injuries which may result from the use or installation of its products, whether or not properly installed or used. Installing Legend Suspensions' components may alter the geometry of your UTV by lowering or raising the vehicle's stock ride height, which may affect the handling characteristics of the UTV. The purchaser is responsible for verifying and maintaining proper and safe geometry of purchaser's UTV. Installing Legend Suspensions' components may decrease initial ground clearance when in lowered position. The UTV will be lower to the ground, and care should be taken to avoid bottoming out, especially over bumps or in turns. Legend Suspensions recommends riding in the stock height position.

### Dispute Resolution

You agree that any dispute between you and Legend ® Suspensions arising hereunder will be resolved exclusively and finally by arbitration administered by the American Arbitration Association ("AAA") and conducted under its rules, except as otherwise provided below.

The arbitration will be conducted before a single arbitrator and will be limited solely to the dispute between you and Legend ® Suspensions. The arbitration shall be held at any reasonable location in Meade County, South Dakota, or by submission of documents, by telephone, online, or in person. Any decision rendered in such arbitration proceedings will be final and binding on each of the parties, and judgment may be entered thereon in any court of competent jurisdiction. Should either party bring a dispute in a forum other than AAA, the arbitrator may award the other party its reasonable costs and expenses, including attorney fees and disbursements incurred in staying or dismissing such other proceedings or in otherwise enforcing compliance with this dispute resolution provision.


YOU UNDERSTAND THAT YOU WOULD HAVE HAD A RIGHT TO LITIGATE DISPUTES THROUGH A COURT, AND THAT YOU HAVE EXPRESSLY AND KNOWINGLY WAIVED THAT RIGHT AND AGREED TO RESOLVE ANY DISPUTES THROUGH BINDING ARBITRATION.

For the purposes of this section, the term "dispute" means any dispute, controversy, or claim arising out of or relating to: (1) this Agreement, its interpretation, or the breach, termination, applicability, or validity thereof, or (2) the purchase or use of any Product, Accessory, service or otherwise from Legend ® Suspensions.

For purposes of this Agreement, the term Legend ® Suspensions means Legend ® Suspensions, its subsidiaries, affiliates, directors, officers, employees, beneficiaries, agents, or assigns; the term "you" means you, the original purchaser, your agents, beneficiaries, or heirs.

### Governing Law

Both you and Legend ® Suspensions consent to the application of the laws of the State of South Dakota to govern, interpret, and enforce all of your rights and Legend ® Suspensions' rights, duties, and obligations arising from, or relating in any manner to, the subject matter of this Limited Two-Year Warranty, without regard to conflict of law principles.



**REVO**  
AIR ASSISTED COIL TECHNOLOGY  
**AATS**

**INSTALLATION GUIDE**

**FITMENT:**  
**1310-2376**  
**2020-2024 POLARIS**  
**RANGER 1000 MODELS**

### English

Please visit [www.legendsuspensions.com](http://www.legendsuspensions.com) for the translated version of this install guide in the following languages: French, German, Italian, and Spanish. Please choose your preferred language at the top of the page and then choose the product you purchased. The install guides are located on the bottom of the product page under Product Downloads.

### Spanish

Visite [www.legendsuspensions.com](http://www.legendsuspensions.com) para obtener la versión traducida de esta guía de instalación en los siguientes idiomas: francés, alemán, italiano y español. Elija su idioma de preferencia en la parte superior de la página y luego elija el producto que compró. Las guías de instalación se encuentran en la parte inferior de la página del producto, en la sección Descargas de productos.

### German

Besuchen Sie bitte [www.legendsuspensions.com](http://www.legendsuspensions.com) für die übersetzte Version dieser Installationsanleitung in den folgenden Sprachen: Französisch, Deutsch, Italienisch und Spanisch. Wählen Sie bitte oben auf der Seite Ihre bevorzugte Sprache und anschließend das von Ihnen gekaufte Produkt aus. Die Installationsanleitungen finden Sie am unteren Rand der Produktseite unter Produkt-Downloads.

### French

Veillez visiter le site [www.legendsuspensions.com](http://www.legendsuspensions.com) pour la version traduite de ce guide d'installation dans les langues suivantes: français, allemand, italien et espagnol. Veuillez choisir votre langue préférée en haut de la page, puis choisissez le produit que vous avez acheté. Les guides d'installation sont disponibles au bas de la fiche produit sous Téléchargements de produits.

### Italian

Prego consultare [www.legendsuspensions.com](http://www.legendsuspensions.com) per la versione tradotta della presente guida di installazione nelle seguenti lingue: francese, tedesco, italiano, e spagnolo. Prego scegliere la lingua preferita in cima alla pagina e in seguito scegliere il prodotto acquistato. Le guide di installazione si trovano in fondo alla pagina di prodotto sotto Scaricamenti di Prodotti.

**Please scan the QR code to access product install guides and warranty in your selected language.**





## STEP ONE: INSTALL COMPRESSOR ASSEMBLY

- Remove the right rear rocker panel (passenger side).
- Connect the two Deutsch connectors from the wire harness to the ECU and the compressor.
- Install the compressor assembly into the area shown in **IMAGE A**.
- Install the supplied washers, lock nut, and bolt along with the (3) self-tapping bolts loosely as shown in **IMAGE A & B** to hold the compressor assembly in place until the wire harness and airlines have been routed.
- Install the air filter in a dry, remote location above where the compressor is located to prevent water from entering the system as shown in **IMAGE C**.

**IMPORTANT:** Air filter life will vary based on enviromental conditions. Protect the air compressor by changing the filter more frequently in dusty conditions.

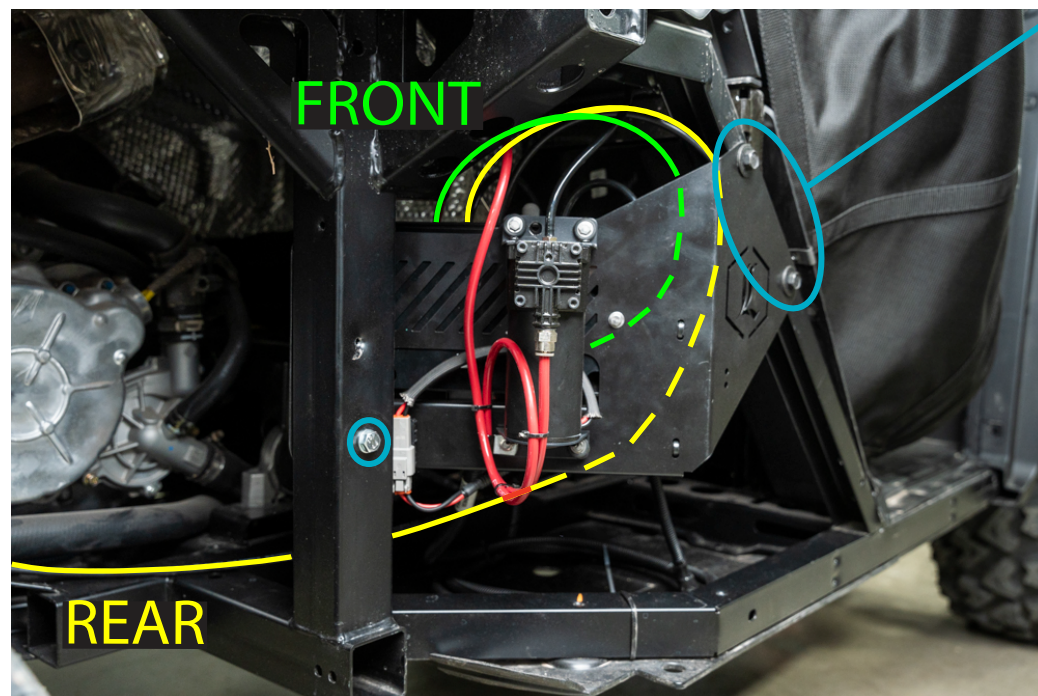


IMAGE A

M8-1.25 x 25mm

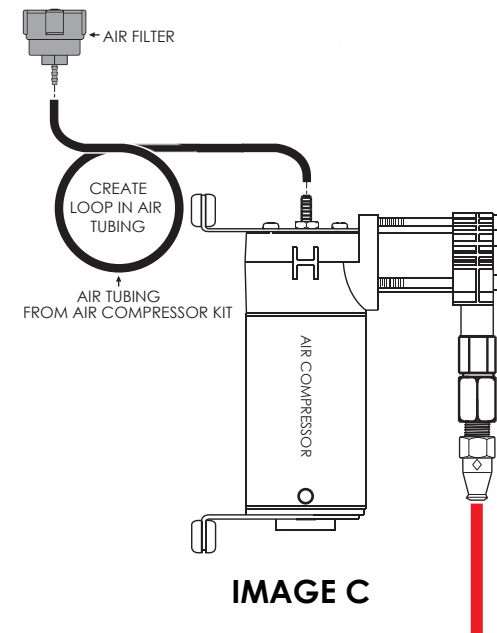


IMAGE C

M6-1.00 x 25mm

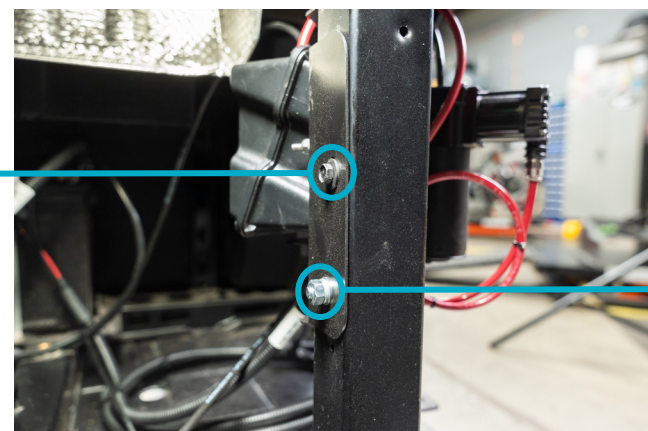


IMAGE B

M8-1.25 x 70mm

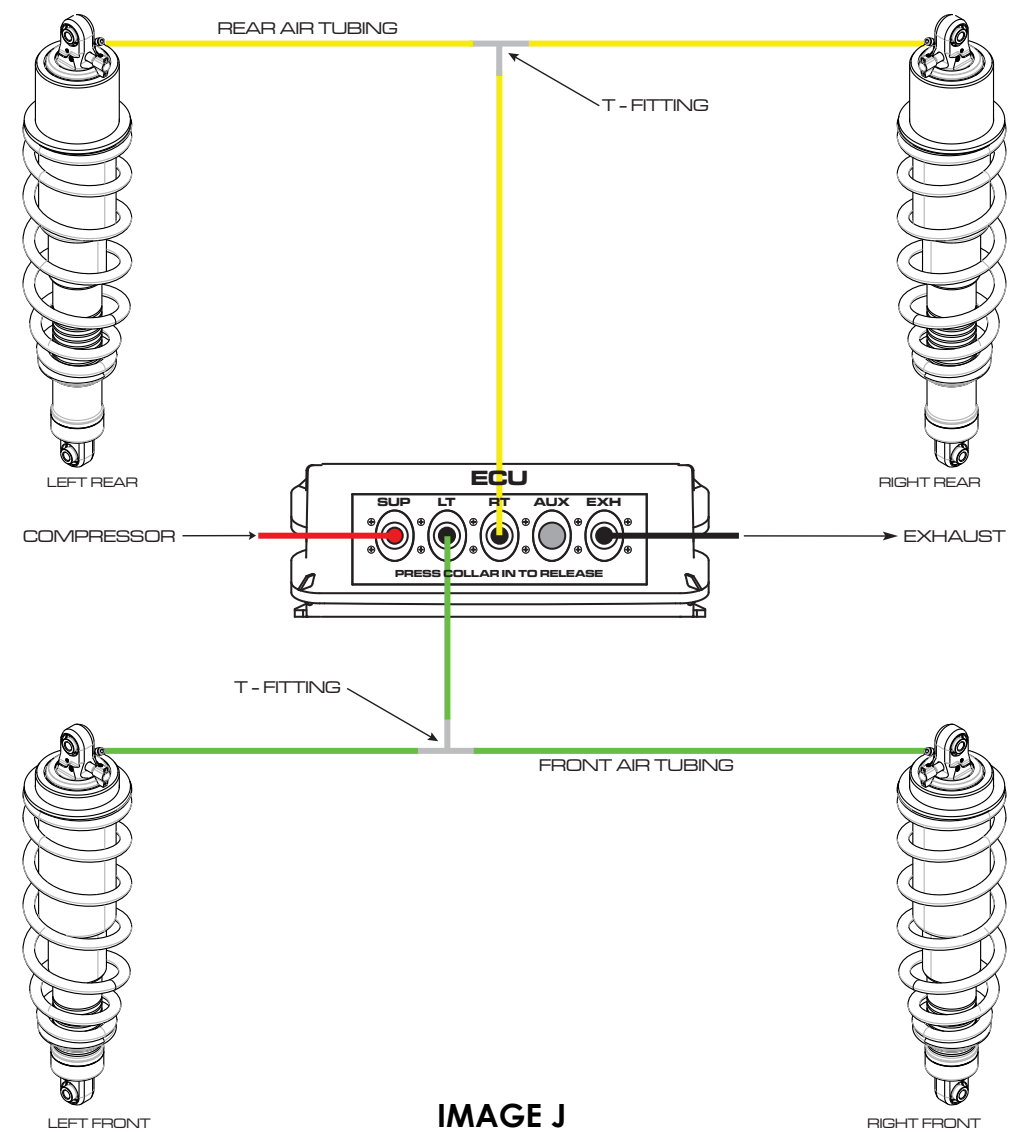


IMAGE J



## STEP SIX: REASSEMBLY AND SYSTEM POWER UP

- Tighten the compressor assembly mounting hardware.
- Reinstall the wheels and lower the UTV to the ground.
- Torque the wheel lug nuts to the OEM specifications.
- Reinstall the 30-amp fuse.  
(NOTE: Compressor will automatically turn on and inflate shocks to preset pressure)
- Reinstall the rear rocker panel, tunnel floor cover(s), battery cover, and any additional items you may have removed.
- Refer to the supplied User's Manual for remote setup, app setup, system adjustment, and troubleshooting procedures.



**STEP FIVE: INSTALL AND ROUTE AIR TUBING**

**IMPORTANT:** Pay extra attention when routing the air tubing to avoid heat sources, sharp edges, and moving components.

- A. Remove the plastic rivets and the tunnel floor cover(s).
- B. Insert the air tubing into the port labeled "LT" on the ECU and route it through the driveline tunnel to the front of the machine.
- C. Cut the tubing approximately 6"- 8" in front of the firewall where there is ample space to install one of the T-fittings.
- D. Install a T-fitting and route a section of tubing to each front shock.
- E. Insert the air tubing into the port labeled "RT" on the ECU and route it to follow the engine coolant hose up towards the right rear shock. Cut the tubing and install a T-fitting. Route a section of tubing from the T-fitting to each rear shock as shown in **IMAGES A / I / J.**
- F. Use the supplied heat shield for the air tubing on the right rear corner by the exhaust to prevent melting it. Ensure there is a minimum of 2"- 3" of clearance between the exhaust and the heat shield.
- G. Secure all air tubing with the supplied plastic cable ties.

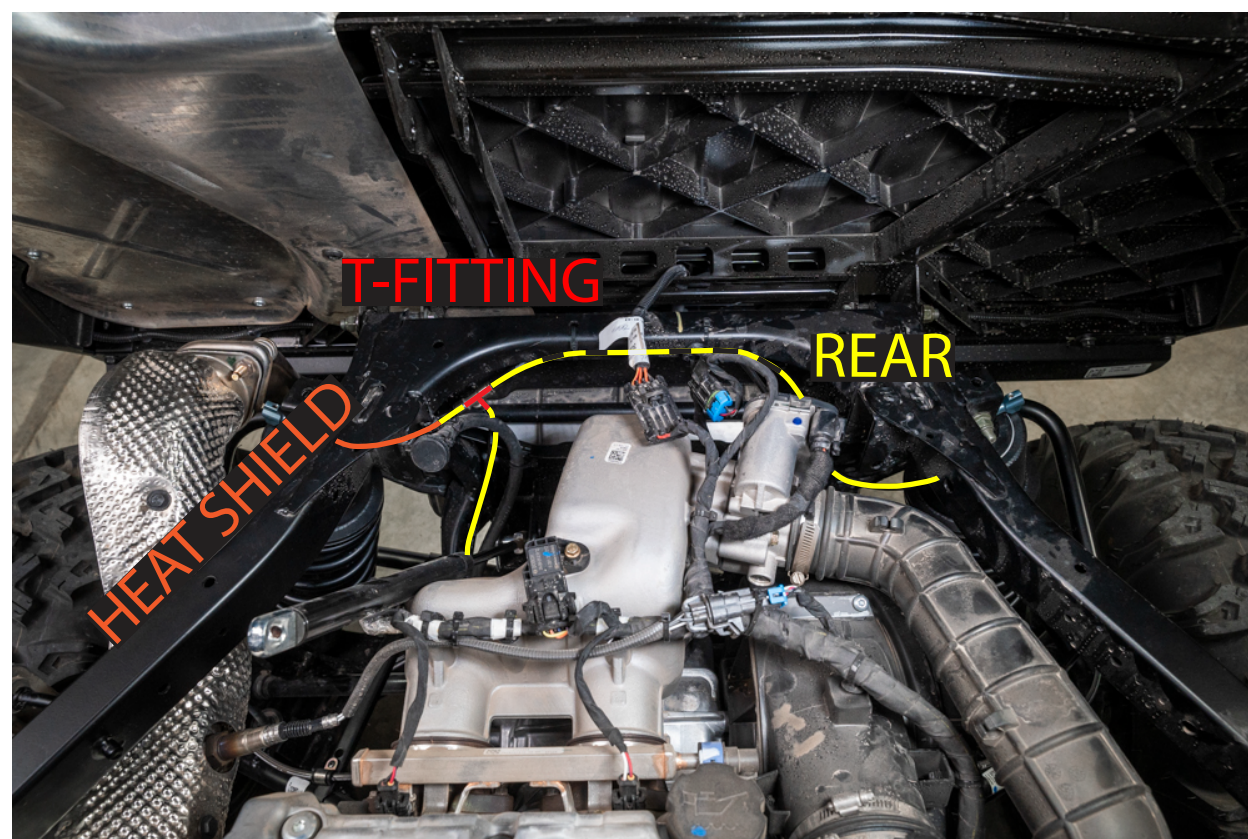


IMAGE I



**STEP TWO: INSTALL WIRE HARNESS**

**IMPORTANT:** Pay extra attention when routing the wire harness to avoid heat sources, sharp edges, and moving components.

- A. Locate the battery compartment and remove the cover.
- B. Remove the 30 amp fuse from the fuse holder in the supplied wire harness before installation to prevent electrical issues.
- C. Route the wire harness from the compressor assembly to the battery compartment as shown in **IMAGE D.**
- D. Securely connect the ring terminals of the wire harness to the positive(+) and negative(-) terminals on the battery.
- E. Secure the wire harness with the supplied plastic cable ties.

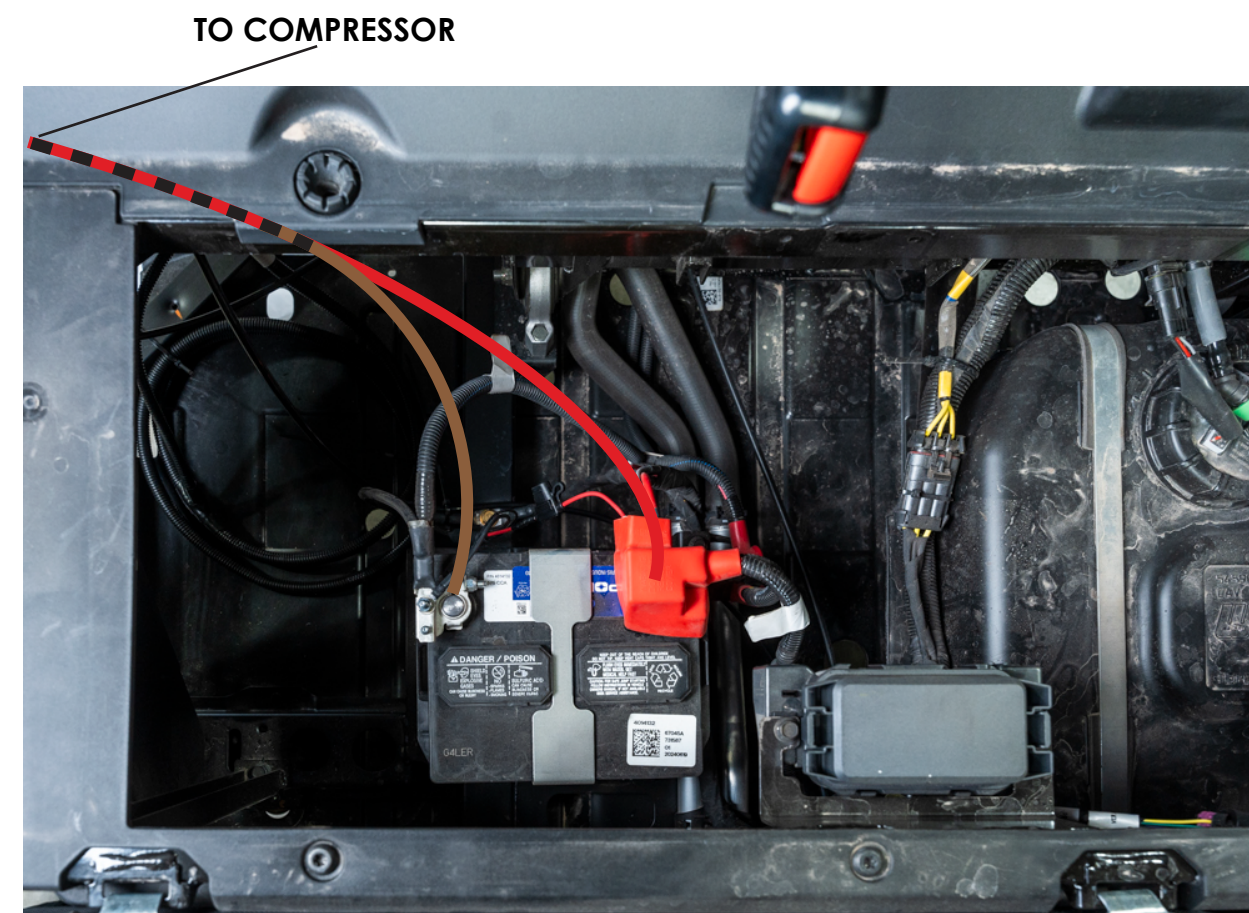


IMAGE D



## STEP THREE: INSTALL REAR SHOCKS

- A. Secure the UTV on jackstands and remove the rear wheels.
- B. Remove the stock shocks (note OEM mounting position).
- C. Using the chart below, install the Legend rear shocks with the rebound adjusters and air fittings oriented correctly based in the original OEM mounting position. Use the supplied spacers, O-rings, and OEM fasteners as shown in **IMAGES E & F**.

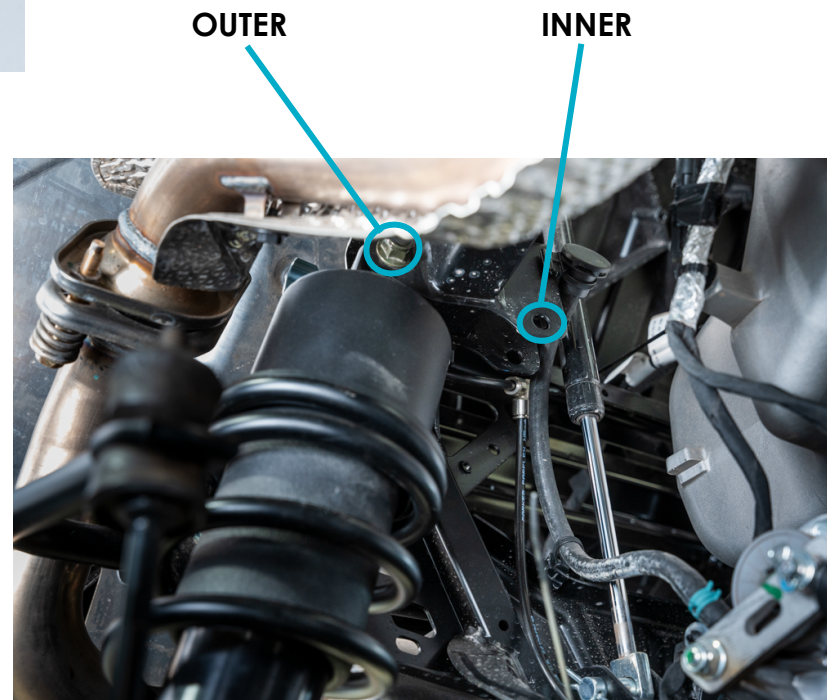
| Shock Mounting Position | Rebound Adjuster Orientation | Air Fitting Orientation |
|-------------------------|------------------------------|-------------------------|
| Inner Holes             | Facing Inwards               | Facing Inwards          |
| Outer Holes             | Facing Outwards              | Facing Outwards         |

- D. Torque the shock fasteners to the OEM specifications.



**IMAGE E**

\* INSTALL (1) O-RING PER SPACER AS SHOWN



**IMAGE F**



## STEP FOUR: INSTALL FRONT SHOCKS

- A. Secure the UTV on jackstands and remove the front wheels.
- B. Remove the stock shocks (note OEM mounting position).
- C. Install the Legend front shocks in the original OEM mounting position using the supplied spacers, O-rings, and OEM fasteners as shown in **IMAGES E / G / H**. Orient the front shocks with the rebound adjusters facing outwards and the air fittings facing inwards.
- D. Torque the shock fasteners to the OEM specifications.



**IMAGE G**



**IMAGE H**